

# **IR Bullet IP Camera**

## **Installation Guide**

Ver. 1.1

MegaVideo Electric (HongKong) Industry Co.,Ltd

# Table of Contents

<b>1. Outdoor Camera Installation .....</b>	<b>3</b>
1.1 Wall Mount Junction Box .....	3
1.2 Pole Mount Junction Box .....	8

# 1. Outdoor Camera Installation

## 1.1 Wall Mount Junction Box

IR Bullet IP Camera can be mounted with the optional accessory: Wall Mount Junction Box. The items and tools needed for installation are listed as follows.

### **Wall Mount Junction Box Package Content:**

- Wall Mount Junction Box
- Plastic Screw Anchor x3
- M4 x 25MM Self-Tapping Screw x3
- M4 x 12MM Mechanical Screw x5
- Waterproof Washer x3
- Cable Gland

### **Items Needed:**

- IR Bullet IP Camera
- Ethernet Cable
- Power Cable (necessary if PSE is not available)
- Alarm Cable (optional)
- Audio Cable (optional)

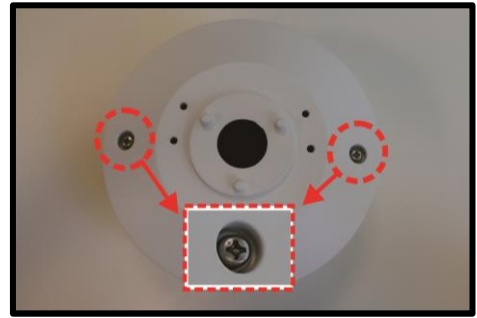
### **Tools Needed:**

- Tools for Drilling
- (+,-) Screwdriver
- Spanner

Follow the steps below to install the Wall Mount Junction Box.

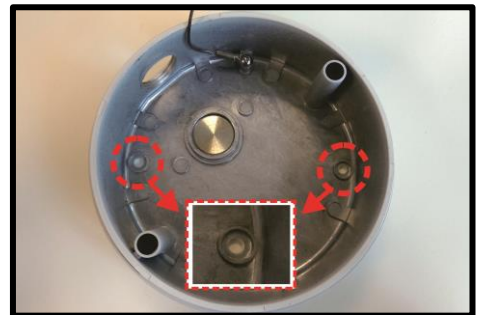
**Step 1:**

Loosen the two screws indicated in the right figure with the screwdriver and detach the Wall Mount Junction Box cover.



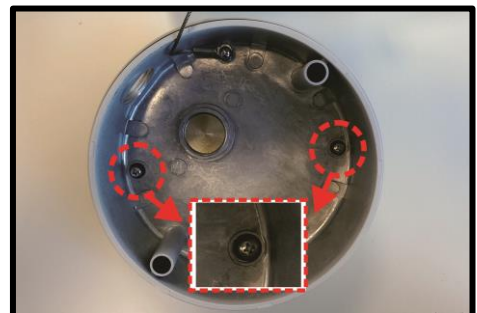
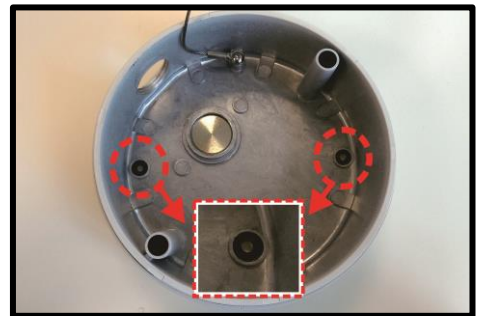
**Step 2:**

Place the Wall Mount Junction Box at the preferred installation location. On the wall, mark the position of the two screw holes indicated in the right figure. Drill a hole on each marked screw hole, and insert the plastic screw anchors into the drilled holes.



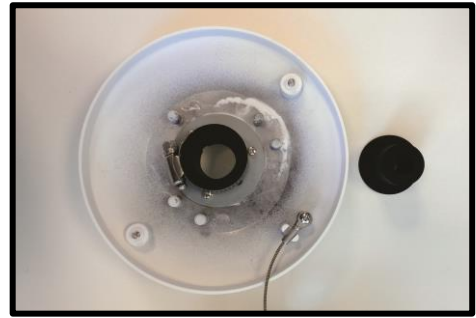
**Step 3:**

Paste the supplied waterproof washers on the two screw holes. Match the two screw holes of the Wall Mount Junction Box with the plastic screw anchors at the installation location. And then fasten the Wall Mount Junction Box to the wall with the supplied M4 self-tapping screws.



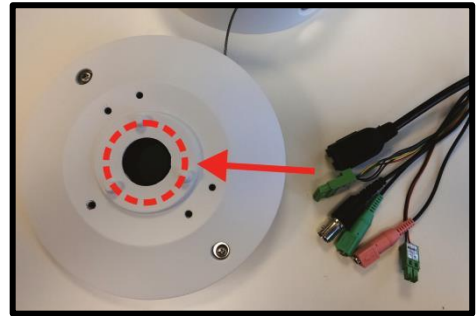
**Step 4:**

Remove the rubber plug from the cable entry hole of the Wall Mount Junction Box cover.



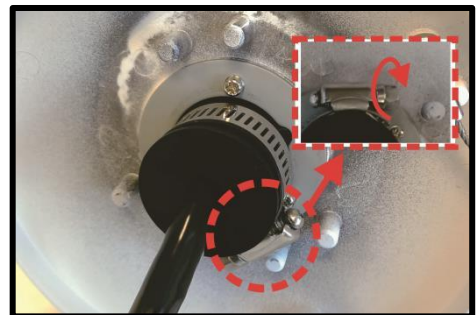
**Step 5:**

Thread the connectors of the All-in-One cable of the camera one by one through the cable entry hole.



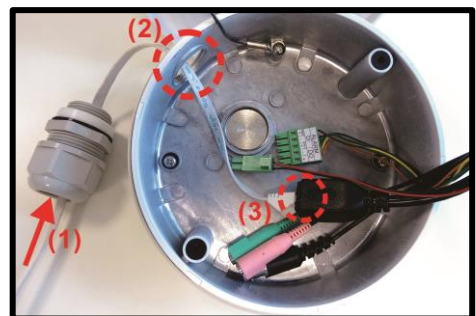
**Step 6:**

Insert the rubber plug back to the cable entry hole and use a flathead screwdriver to tighten the stainless steel ring by turning the knob clockwise. Make sure there's no gap between the All-in-One cable and the cable entry hole.



**Step 7:**

Connect the required cables, e.g. Ethernet cable, to the connectors of the All-in-One cable through (1) the cable gland and (2) the conduit entry hole. (3) Then coat the joints between the connectors and the cables with silicone gel.





**NOTE:** For the cable gland installation, please follow the steps below.

**Step A:**

Loosen the thread-lock sealing nut from the cable gland body.



**Step B:**

Insert the required cables, e.g. Ethernet cable, to the thread-lock sealing nut and the cable gland body from the bottom.



**Step C:**

Twist the cable gland body a little bit back to the thread-lock sealing nut but not entirely tightened.



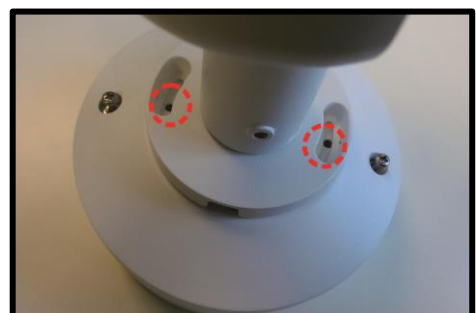
**Step 8:**

Adjust the cables and twist the cable gland into the conduit entry hole.



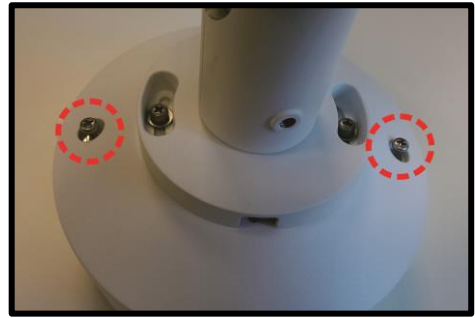
**Step 9:**

Arrange the All-in-One cable orderly, and put back the Wall Mount Junction Box cover. Align the two screw holes of the camera with the screw holes on the Wall Mount Junction Box cover, and fasten the camera with the M4 Mechanical Screws.



**Step 10:**

Adjust the position of Wall Mount Junction Box cover properly and fasten the two screws to tighten the cover.

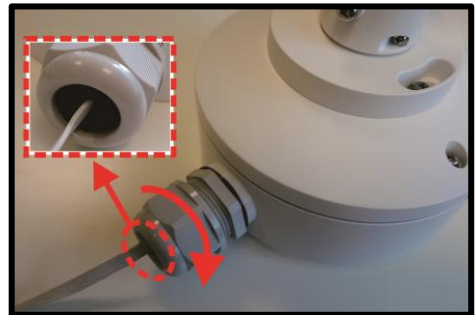


**NOTE:** When securing the Wall Mount Junction Box cover, user **MUST** align the two arrow marks with each other to ensure the cover is properly fixed.



**Step 11:**

Fasten the thread-lock sealing nut tightly with a spanner until the cable is completely covered.



**NOTE:** User **MUST** coat the joints between the cable gland and the cables with silicone gel to ensure the waterproof function.

**Step 12:**

Rotate and point the camera to a desired direction. The Wall Mount Junction Box installation is completed as the right figure.



## 1.2 Pole Mount Junction Box

IR Bullet IP Camera can be mounted with the optional accessory: Pole Mount Junction Box. The items and tools needed for installation are listed as follows.

### **Pole Mount Junction Box Package Content:**

- Pole Mount Junction Box
- M4 x 12MM Mechanical Screw x5
- Stainless Steel Ring x2



**NOTE:** The supplied stainless steel rings are applicable to poles with the diameter from 70 to 180MM.

### **Items Needed:**

- IR Bullet IP Camera
- Ethernet Cable
- Power Cable (necessary if PSE is not available)
- Alarm Cable (optional)
- Audio Cable (optional)

### **Tools Needed:**

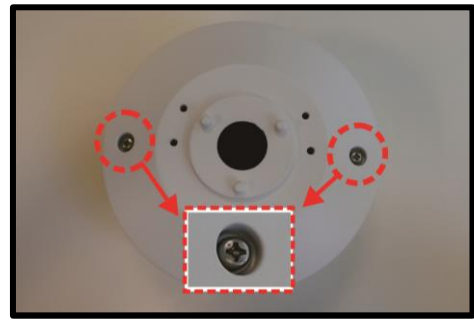
- (+,-) Screwdriver
- Spanner



Follow the steps below to install the Pole Mount Junction Box.

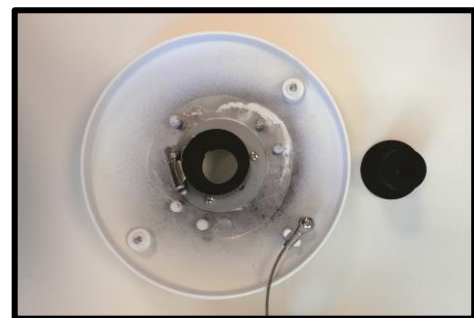
**Step 1:**

Loosen the two screws indicated in the right figure with the screwdriver and detach the Pole Mount Junction Box cover.



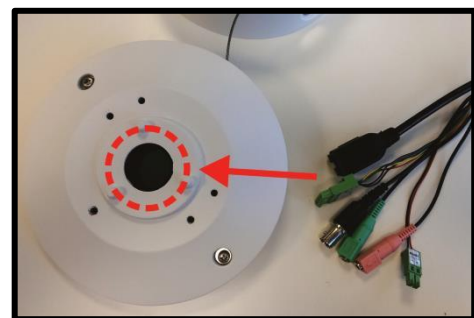
**Step 2:**

Remove the rubber plug from the cable entry hole of the Pole Mount Junction Box cover.



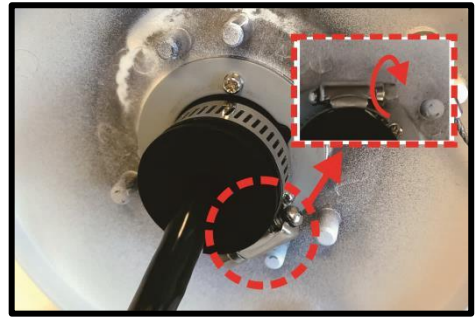
**Step 3:**

Thread the connectors of the All-in-One cable of the camera one by one through the cable entry hole.



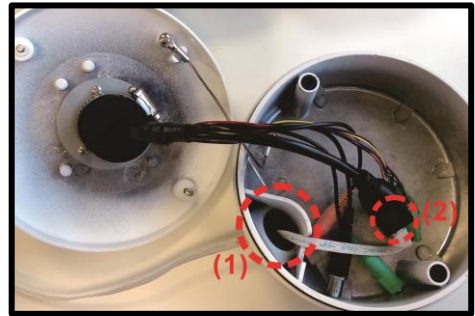
**Step 4:**

Insert the rubber plug back to the cable entry hole and use a flathead screwdriver to tighten the stainless steel ring by turning the knob clockwise. Make sure there's no gap between the All-in-One cable and the cable entry hole.



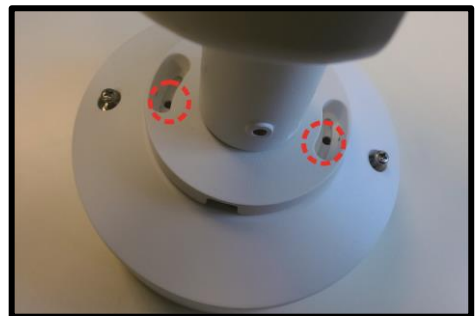
**Step 5:**

(1) Connect the required cables, e.g. Ethernet cable, to the connectors of the All-in-One cable through the cable entry hole. (2) Then coat the joints between the connectors and the cables with silicone gel.



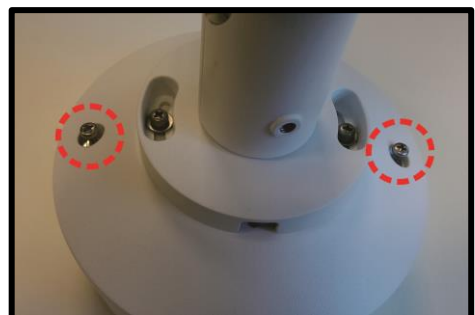
**Step 6:**

Arrange the All-in-One cable orderly, and put back the Pole Mount Junction Box cover. Align the two screw holes of the camera with the screw holes on the Pole Mount Junction Box cover, and fasten the camera with the M4 Mechanical Screws.



**Step 7:**

Adjust the position of Pole Mount Junction Box cover properly and fasten the two screws to tighten the cover.

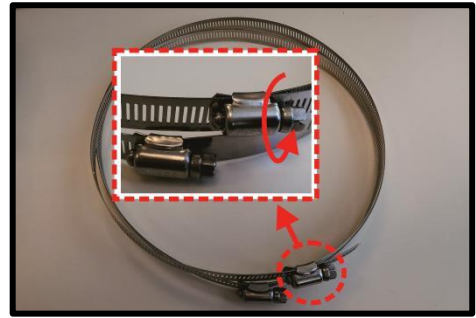


**NOTE:** When securing the Pole Mount Junction Box cover, user **MUST** align the two arrow marks with each other to ensure the cover is properly fixed.



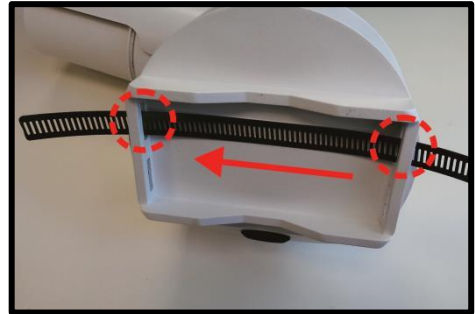
**Step 8:**

Loosen the knobs on the stainless steel rings by turning them counterclockwise with a flathead screwdriver.



**Step 9:**

Insert the stainless steel rings into the holes on the back of the Pole Mount Junction Box.

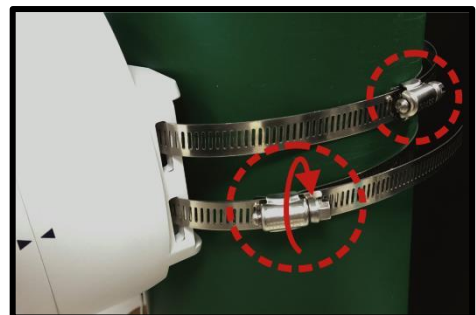


**NOTE:** When installing the Pole Mount Junction Box on the pole, the cable entry hole **MUST** be at the bottom side to ensure the waterproof function.



**Step 10:**

Place the Pole Mount Junction Box at the preferred installation location. Circle around the pole with the stainless steel rings and turn the knobs clockwise with a flathead screwdriver until the stainless steel rings are firmly tightened.



**Step 11:**

Rotate and point the camera to a desired direction. The Pole Mount Junction Box installation is completed as the right figure.

